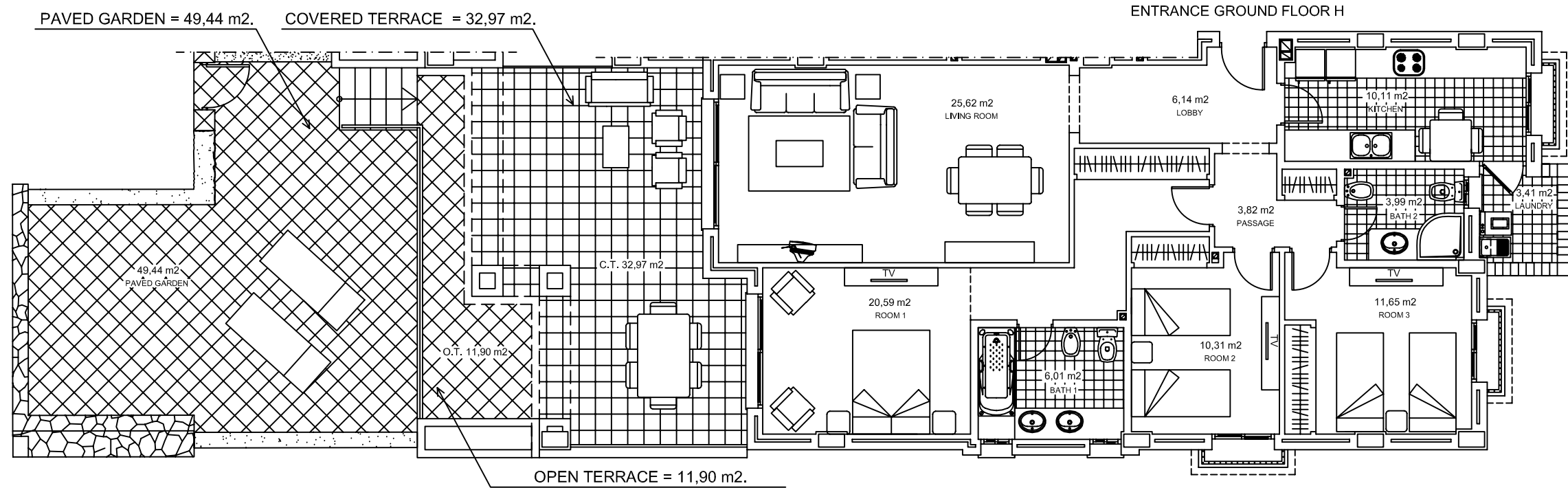


BLOCK II GROUND FLOOR HOME GROUND FLOOR H



HOME SURFACE	=	120,09 M ² .
COVERED TERRACE SURFACE	=	32,97 M ² .
OPEN TERRACE SURFACE	=	11,90 M ² .
PAVED GARDEN SURFACE	=	49,44 M ² .
TOTAL SURFACE	=	214,40 M ² .

PARKING AREA
 STOREROOM SURFACE = 8,87 M².