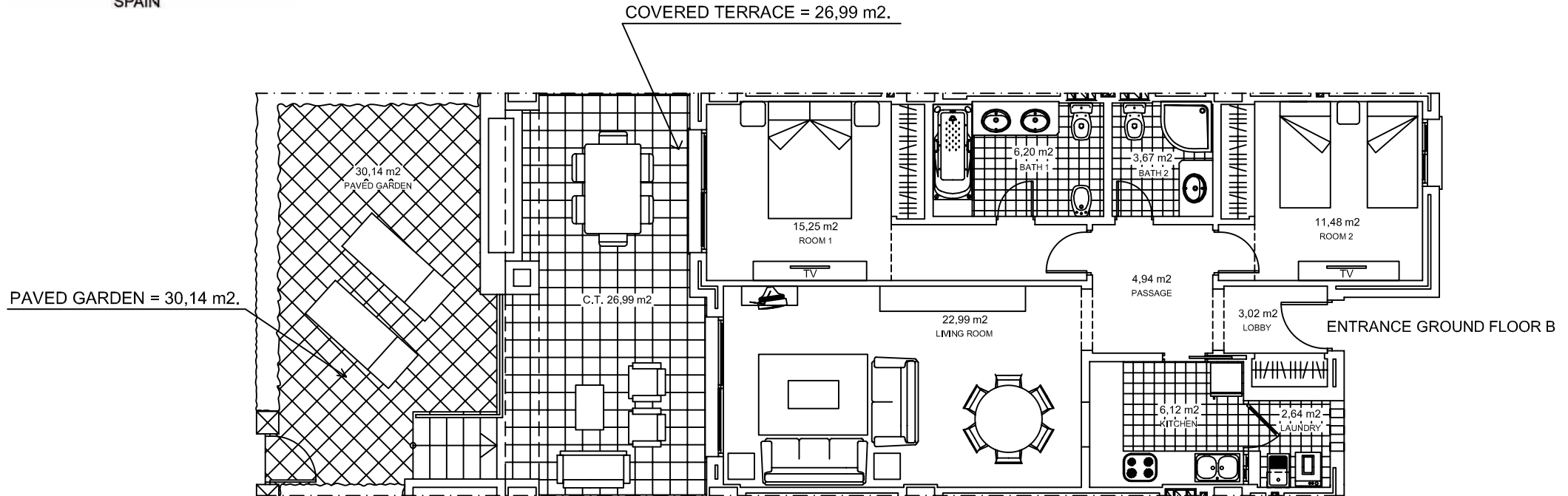


BLOCK II GROUND FLOOR HOME GROUND FLOOR C



HOME SURFACE	=	89,38 M ² .
COVERED TERRACE SURFACE	=	26,99 M ² .
PAVED GARDEN SURFACE	=	<u>30,14 M².</u>
TOTAL SURFACE	=	146,51 M ² .

PARKING AREA
STOREROOM SURFACE = 9,96 M².